

# CATALOGUE 2024 CATALOG



**APRIL**  
Super Flo

Votre solution clé en main depuis 1980

Your one stop solution since 1980



Nathaly April  
Présidente/President

## MOT DE LA PRÉSIDENTE

*April Super Flo est votre solution clé en main avec 160 produits emballés, 50 produits en vrac, et une équipe de ventes et de service à la clientèle travaillant sans relâche pour votre succès !*

*Les clients sont toujours ravis de notre nouvelle HD-EXTRA ! Cette graisse super collante est recommandée pour les roulements de roues, les sellettes d'attelages et les applications de charge élevées du transport, des équipements lourds, industriels et maritimes.*

*Cette année, nous avons ajouté quatre lubrifiants hydrauliques et de transmission 100 % synthétiques de qualité supérieure à notre gamme de produits : les TDH SYN et TO-4 SYN toutes saisons, le HD-668 pour les applications Allison TES-668 et le CD-40 pour les applications Eaton PS-386.*

*Et enfin, nous avons ajouté HD-5 à notre gamme de produits, une graisse économique pour les sellettes d'attelages.*

*Donnez-nous un coup de fil et nous serons heureux de vous faire visiter notre usine ! Venez et constatez par vous-même pourquoi autant de clients ont choisi April Super Flo comme principal fournisseur de lubrifiants !*

## A WORD FROM THE PRESIDENT

*April Super Flo is your one-stop solution with 160 packaged products, 50 bulk products, and sales and customer service teams working tirelessly for your success!*

*Customers are still raving about our new HD-EXTRA! This super tacky grease is recommended for wheel bearings, fifth wheel trailer hitches and high load transportation, heavy equipment, industrial and marine applications.*

*This year we've added four superior quality 100% synthetic transmission and hydraulic lubricants to our product line: the all-season TDH SYN and TO-4 SYN, the HD-668 for Allison TES-668 applications and the CD-40 for Eaton PS-386 applications.*

*And finally, we've added HD-5, an economical 5th wheel grease to our product line.*

*Just call and we'll be delighted to take you on a tour of our facilities! Come and see for yourself why so many have chosen April Super Flo as their primary lubricant supplier!*



# TABLE DES MATIÈRES

## TABLE OF CONTENTS

HUILE MOTEUR ENGINE OIL .....	4-6
HUILE MOTEUR DIESEL DIESEL ENGINE OIL.....	7
FLUIDE POUR TRANSMISSIONS TRANSMISSION FLUID.....	8
HUILE À ENGRENAGES GEAR OIL.....	9
HUILE HYDRAULIQUE HYDRAULIC OIL .....	10-11
FLUIDE TRANS-HYDRAULIQUE TDH TDH TRANS-HYDRAULIC FLUID.....	11
HUILE POUR SCIES À CHAÎNE CHAIN SAW OIL.....	12
GRAISSE GREASE .....	12
LUBRIFIANTS BIO BIO LUBRICANTS .....	13
LUBRIFIANTS INDUSTRIELS INDUSTRIAL LUBRICANTS.....	14
ANTIGEL/LIQUIDE DE REFROIDISSEMENT ANTIFREEZE/COOLANTS .....	16
LAVE-GLACE WINDSHIELD WASHER .....	17
ANTIROUILLE ANNUEL ANNUAL RUSTPROOFING .....	17
FLUIDE D'ÉCHAPPEMENT DIESEL DIESEL EXHAUST FLUID .....	17
NETTOYEUR POUR PIÈCES PARTS CLEANER .....	17
NOS GÉRANTS DE TERRITOIRE OUR TERRITORY MANAGERS .....	18

# HUILE MOTEUR / ENGINE OIL

## MÉLANGE SYNTHÉTIQUE / SYNTHETIC BLEND

PRODUIT / PRODUCT	GRADE	FORMAT	LITRES	CODE
<b>PRO</b> API SP	5W-20	pinte/quart	12 x 0.946 L	12-PRO5W20-SF
		5 litres	3 x 5 L	15-PRO5W20-SF
		seau/pail	18.9 L	18.9-PRO5W20-SF
		barillet/keg	60 L	77-PRO5W20-SF
		baril/drum	205 L	205-PRO5W20-SF
		tote	1000 L	900-PRO5W20-SF
		vrac/bulk	vrac/bulk	100-PRO5W20-SF
	5W-30	pinte/quart	12 x 0.946 L	12-PRO5W30-SF
		5 litres	3 x 5 L	15-PRO5W30-SF
		seau/pail	18.9 L	18.9-PRO5W30-SF
		barillet/keg	60 L	77-PRO5W30-SF
		baril/drum	205 L	205-PRO5W30-SF
		tote	1000 L	900-PRO5W30-SF
		vrac/bulk	vrac/bulk	100-PRO5W30-SF
	10W-30	pinte/quart	12 x 0.946 L	12-PRO10W30-SF
		5 litres	3 x 5 L	15-PRO10W30-SF
		seau/pail	18.9 L	18.9-PRO10W30-SF
		barillet/keg	60 L	77-PRO10W30-SF
		baril/drum	205 L	205-PRO10W30-SF
		tote	1000 L	900-PRO10W30-SF
		vrac/bulk	vrac/bulk	100-PRO10W30-SF*
10W-40	pinte/quart	12 x 0.946 L	12-PRO10W40-SF	
	tote	1000 L	900-PRO10W40-SF	
20W-50	pinte/quart	12 x 0.946 L	12-PRO20W50-SF	
	tote	1000 L	900-PRO20W50-SF	
<b>HM</b> HAUT MILLAGE / HIGH MILEAGE API SP	5W-20	pinte/quart	12 x 0.946 L	12-BLE5W20HM-SF
		5 litres	3 x 5 L	15-BLE5W20HM-SF
	5W-30	pinte/quart	12 x 0.946 L	12-BLE5W30HM-SF
		5 litres	3 x 5 L	15-BLE5W30HM-SF

\* disponible de décembre à février et de mai à août / available December through February and May through August



# HUILE MOTEUR / ENGINE OIL

100% SYNTHÉTIQUE / SYNTHETIC

PRODUIT / PRODUCT	GRADE	FORMAT	LITRES	CODE	
<b>SYN</b> API SP	0W-16	pinte/quart	12 x 0.946 L	12-SYN0W16-SF	
		5 litres	3 x 5 L	15-SYN0W16-SF	
		barillet/keg	60 L	77-SYN0W16-SF	
		baril/drum	205 L	205-SYN0W16-SF	
		tote	1000 L	900-SYN0W16-SF	
	0W-20	pinte/quart	12 x 0.946 L	12-SYN0W20-SF	
		5 litres	3 x 5 L	15-SYN0W20-SF	
		seau/pail	18.9 L	18.9-SYN0W20-SF	
		barillet/keg	60 L	77-SYN0W20-SF	
		baril/drum	205 L	205-SYN0W20-SF	
		tote	1000 L	900-SYN0W20-SF	
	5W-20	vrac/bulk	vrac/bulk	100-SYN0W20-SF	
		pinte/quart	12 x 0.946 L	12-SYN5W20-SF	
		5 litres	3 x 5 L	15-SYN5W20-SF	
		seau/pail	18.9 L	18.9-SYN5W20-SF	
		barillet/keg	60 L	77-SYN5W20-SF	
		baril/drum	205 L	205-SYN5W20-SF	
	5W-30	tote	1000 L	900-SYN5W20-SF	
		vrac/bulk	vrac/bulk	100-SYN5W20-SF	
		pinte/quart	12 x 0.946 L	12-SYN5W30-SF	
5 litres		3 x 5 L	15-SYN5W30-SF		
seau/pail		18.9 L	18.9-SYN5W30-SF		
barillet/keg		60 L	77-SYN5W30-SF		
<b>DEX</b> dexos™1 Gen 3 API SP	0W-20	baril/drum	205 L	205-HYPER0W20	
		tote	1000 L	900-HYPER0W20	
		vrac/bulk	vrac/bulk	100-HYPER0W20	
		pinte/quart	12 x 0.946 L	12-HYPER0W20	
		5 litres	3 x 5 L	15-HYPER0W20	
		seau/pail	18.9 L	18.9-HYPER0W20	
	5W-30	barillet/keg	60 L	77-HYPER0W20	
		baril/drum	205 L	205-HYPER0W20	
		tote	1000 L	900-HYPER0W20	
		vrac/bulk	vrac/bulk	100-HYPER0W20	
		pinte/quart	12 x 0.946 L	12-HYPER5W30	
		5 litres	3 x 5 L	15-HYPER5W30	
	<b>EURO</b>	0W-20 VW 508 00, 509 00	seau/pail	18.9 L	18.9-HYPER5W30
			barillet/keg	60 L	77-HYPER5W30
			baril/drum	205 L	205-HYPER5W30
			tote	1000 L	900-HYPER5W30
			vrac/bulk	vrac/bulk	100-HYPER5W30
			pinte/quart	12 x 0.946 L	12-HYPER5W30VW
		5W-30 VW 504 00, 507 00	5 litres	3 x 5 L	15-HYPER5W30VW
			seau/pail	18.9 L	18.9-HYPER5W30VW
barillet/keg			60 L	77-HYPER5W30VW	
baril/drum			205 L	205-HYPER5W30VW	
tote			1000 L	900-HYPER5W30VW	
vrac/bulk			vrac/bulk	100-HYPER5W30VW	
5W-30 VW 502 00, 505 00, 505 01		5 litres	3 x 5 L	15-SYN5W30VW	
		barillet/keg	60 L	77-SYN5W30VW	
		baril/drum	205 L	205-SYN5W30VW	
		tote	1000 L	900-SYN5W30VW	
5W-40 VW 502 00, 505 00, 505 01		vrac/bulk	vrac/bulk	100-SYN5W30VW	
		pinte/quart	12 x 0.946 L	12-SYN5W40-SF	
		5 litres	3 x 5 L	15-SYN5W40-SF	
		seau/pail	18.9 L	18.9-SYN5W40-SF	
	barillet/keg	60 L	77-SYN5W40-SF		
	baril/drum	205 L	205-SYN5W40-SF		
<b>RACING</b>	5W-50	tote	1000 L	900-SYN5W40-SF	
		vrac/bulk	vrac/bulk	100-SYN5W40-SF	
		pinte/quart	12 x 0.946 L	12-HYPER5W50	
		seau/pail	18.9 L	18.9-HYPER5W50	
		barillet/keg	60 L	77-HYPER5W50	
		baril/drum	205 L	205-HYPER5W50	
		tote	1000 L	900-HYPER5W50	

# HUILE POUR PETITS MOTEURS / SMALL ENGINE OIL

## CONVENTIONNELLE / CONVENTIONAL

PRODUIT / PRODUCT	GRADE-TYPE	FORMAT	LITRES	CODE	
<b>4 temps / 4-cycle</b> API SJ, JASO MA	5W-30	pinte/quart	12 x 0.946 L	12-5W304C-SF	
		barillet/keg	60 L	77-5W304C-SF	
		baril/drum	205 L	205-5W304C-SF	
		tote	1000 L	900-5W304C-SF	
	10W-40	pinte/quart	12 x 0.946 L	12-10W404C-SF	
		barillet/keg	60 L	77-10W404C-SF	
		baril/drum	205 L	205-10W404C-SF	
		tote	1000 L	900-10W404C-SF	
	20W-50	pinte/quart	12 x 0.946 L	12-20W504C-SF	
		tote	1000 L	900-20W504C-SF	
	<b>non-détergente / non-detergent</b>	SAE 30	pinte/quart	12 x 0.946 L	12-SAE30ND-SF
			tote	1000 L	900-SAE30ND-SF
<b>tondeuse / lawnmower</b>	SAE 30	pinte/quart	12 x 0.946 L	12-SAE30LM	
		baril/drum	205 L	205-SAE30LM	
		tote	1000 L	900-SAE30LM	
<b>2 temps / 2-cycle</b>	motoneiges snowmobile	pinte/quart	12 x 0.946 L	12-SNOW-SF	
		gallon	4 x 4 L	16-SNOW-SF	
		baril/drum	205 L	205-SNOW-SF	
		tote	1000 L	900-SNOW-SF	
	TC-W3	pinte/quart	12 x 0.946 L	12-TCW3-SF	
		gallon	4 x 4 L	16-TCW3-SF	
		barillet/keg	60 L	77-TCW3-SF	
		baril/drum	205 L	205-TCW3-SF	
		tote	1000 L	900-TCW3-SF	

## MÉLANGE SYNTHÉTIQUE / SYNTHETIC BLEND

PRODUIT / PRODUCT	FORMAT	LITRES	CODE
<b>MIX</b> (2 temps refroidis à l'air / 2-cycle air-cooled)	pinte/quart	12 x 0.946 L	12-MIX-SF

## 100% SYNTHÉTIQUE / SYNTHETIC

PRODUIT / PRODUCT	GRADE-TYPE	FORMAT	LITRES	CODE
<b>4 temps / 4-cycle</b> API SN, JASO MA	0W-40	pinte/quart	12 x 0.946 L	12-SYNOW40C
		barillet/keg	60 L	77-SYNOW40C
		baril/drum	205 L	205-SYNOW40C
		tote	1000 L	900-SYNOW40C
<b>2 temps / 2-cycle</b>	motoneiges snowmobile	pinte/quart	12 x 0.946 L	12-SYNSNOW-SF
		gallon	4 x 4 L	16-SYNSNOW-SF
		barillet/keg	60 L	77-SYNSNOW-SF
	TC-W3	pinte/quart	12 x 0.946 L	12-SYNTCW3-SF
		barillet/keg	60 L	77-SYNTCW3-SF
		baril/drum	205 L	205-SYNTCW3-SF
		tote	1000 L	900-SYNTCW3-SF



# HUILE MOTEUR DIESEL / DIESEL ENGINE OIL

## CONVENTIONNELLE / CONVENTIONAL

PRODUIT / PRODUCT	GRADE	FORMAT	LITRES	CODE	
<b>GOLD K</b> API CK-4	15W-40	pinte/quart	12 x 0.946 L	12-15W40GOLDK-SF	
		5 litres	3 x 5 L	15-15W40GOLDK-SF	
		seau/pail	18.9 L	18.9-15W40GOLDK-SF	
		barillet/keg	60 L	77-15W40GOLDK-SF	
		baril/drum	205 L	205-15W40GOLDK-SF	
		tote	1000 L	900-15W40GOLDK-SF	
		vrac/bulk	vrac/bulk	100-15W40GOLDK-SF	
<b>UNIVERSELLE / UNIVERSAL</b> API CF, API SG	10W	seau/pail	18.9 L	18.9-SP10-SF	
		baril/drum	205 L	205-SP10-SF	
		tote	1000 L	900-SP10-SF	
		vrac/bulk	vrac/bulk	100-SP10-SF	
	SAE 30	seau/pail	18.9 L	18.9-SP30-SF	
		baril/drum	205 L	205-SP30-SF	
		tote	1000 L	900-SP30-SF	
	SAE 50	seau/pail	18.9 L	18.9-SP50-SF	
		baril/drum	205 L	205-SP50-SF	
		tote	1000 L	900-SP50-SF	
	<b>SERIE 1</b> (2 temps / 2-cycle) Detroit Diesel 7SE270	SAE 30	seau/pail	18.9 L	18.9-SAE30DD-SF
			baril/drum	205 L	205-SAE30DD-SF
tote			1000 L	900-SAE30DD-SF	
SAE 40		gallon	4 x 4 L	16-SAE40DD-SF	
		seau/pail	18.9 L	18.9-SAE40DD-SF	
		baril/drum	205 L	205-SAE40DD-SF	
		tote	1000 L	900-SAE40DD-SF	

## MÉLANGE SYNTHÉTIQUE / SYNTHETIC BLEND

PRODUIT / PRODUCT	GRADE	FORMAT	LITRES	CODE
<b>GOLD K</b> API CK-4	5W-40	seau/pail	18.9 L	18.9-BLE5W40K-SF
		baril/drum	205 L	205-BLE5W40K-SF
		tote	1000 L	900-BLE5W40K-SF
	10W-30	5 litres	3 x 5 L	15-BLE10W30K-SF
		seau/pail	18.9 L	18.9-BLE10W30K-SF
		barillet/keg	60 L	77-BLE10W30K-SF
		baril/drum	205 L	205-BLE10W30K-SF
		tote	1000 L	900-BLE10W30K-SF
		vrac/bulk	vrac/bulk	100-BLE10W30K-SF
	15W-40	5 litres	3 x 5 L	15-BLE15W40K-SF
		seau/pail	18.9 L	18.9-BLE15W40K-SF
		barillet/keg	60 L	77-BLE15W40K-SF
		baril/drum	205 L	205-BLE15W40K-SF
		tote	1000 L	900-BLE15W40K-SF
		vrac/bulk	vrac/bulk	100-BLE15W40K-SF

## 100% SYNTHÉTIQUE / SYNTHETIC

PRODUIT / PRODUCT	GRADE	FORMAT	LITRES	CODE
<b>GOLD K</b> API CK-4	0W-40	pinte/quart	12 x 0.946 L	12-SYN0W40D-SF
		5 litres	3 x 5 L	15-SYN0W40D-SF
		seau/pail	18.9 L	18.9-SYN0W40D-SF
		baril/drum	205 L	205-SYN0W40D-SF
		tote	1000 L	900-SYN0W40D-SF
		vrac/bulk	vrac/bulk	100-SYN0W40D-SF
	5W-30	5 litres	3 x 5 L	15-SYN5W30K-SF
		seau/pail	18.9 L	18.9-SYN5W30K-SF
		barillet/keg	60 L	77-SYN5W30K-SF
		baril/drum	205 L	205-SYN5W30K-SF
		tote	1000 L	900-SYN5W30K-SF
	5W-40	pinte/quart	12 x 0.946 L	12-SYN5W40K-SF
		5 litres	3 x 5 L	15-SYN5W40K-SF
		seau/pail	18.9 L	18.9-SYN5W40K-SF
		barillet/keg	60 L	77-SYN5W40K-SF
		baril/drum	205 L	205-SYN5W40K-SF
		tote	1000 L	900-SYN5W40K-SF
	vrac/bulk	vrac/bulk	100-SYN5W40K-SF	

# FLUIDE POUR TRANSMISSIONS / TRANSMISSION FLUID

## CONVENTIONNELLE / CONVENTIONAL

PRODUIT / PRODUCT	GRADE	FORMAT	LITRES	CODE
<b>TO-4</b> Caterpillar TO-4	10W	seau/pail	18.9 L	18.9-SP10T04-SF
		baril/drum	205 L	205-SP10T04-SF
		tote	1000 L	900-SP10T04-SF
		vrac/bulk	vrac/bulk	100-SP10T04-SF
	SAE 30	seau/pail	18.9 L	18.9-SP30T04-SF
		baril/drum	205 L	205-SP30T04-SF
		tote	1000 L	900-SP30T04-SF
	SAE 50	seau/pail	18.9 L	18.9-SP50T04-SF
		baril/drum	205 L	205-SP50T04-SF
tote		1000 L	900-SP50T04-SF	
<b>ATF D3M</b> (GM et Ford antérieurs à 2006 / pre-2006 GM & Ford) Dexron-III, Mercon XT-2-QDX	pinte/quart	12 x 0.946 L	12-DX-SF	
	5 litres	3 x 5 L	15-DX-SF	
	seau/pail	18.9 L	18.9-DX-SF	
	barillet/keg	60 L	77-DX-SF	
	baril/drum	205 L	205-DX-SF	
	tote	1000 L	900-DX-SF	
<b>ATF TYPE F</b> (Ford antérieur à 1980 / pre-1980 Ford) ESW M2C33-F/G	seau/pail	18.9 L	18.9-ATFF-SF	
	baril/drum	205 L	205-ATFF-SF	
	tote	1000 L	900-ATFF-SF	

## 100% SYNTHÉTIQUE / SYNTHETIC

PRODUIT / PRODUCT	GRADE	FORMAT	LITRES	CODE
<b>ATF MULTI</b> (5 vitesses ou moins / 5 or less speeds)		pinte/quart	12 x 0.946 L	12-ATFM-SF
		5 litres	3 x 5 L	15-ATFM-SF
		seau/pail	18.9 L	18.9-ATFM-SF
		barillet/keg	60 L	77-ATFM-SF
		baril/drum	205 L	205-ATFM-SF
		tote	1000 L	900-ATFM-SF
<b>ATF MULTI LV</b> (6 vitesses ou plus / 6 or more speeds)		pinte/quart	12 x 0.946 L	12-ATFMLV
		5 litres	3 x 5 L	15-ATFMLV
		seau/pail	18.9 L	18.9-ATFMLV
		barillet/keg	60 L	77-ATFMLV
		baril/drum	205 L	205-ATFMLV
		tote	1000 L	900-ATFMLV
		vrac/bulk	vrac/bulk	100-ATFMLV
<b>CVT FLUIDE / FLUID</b>		pinte/quart	12 x 0.946 L	12-CVT-SF
		barillet/keg	60 L	77-CVT-SF
		baril/drum	205 L	205-CVT-SF
<b>DCT FLUIDE / FLUID</b>		pinte/quart	12 x 0.946 L	12-DCT-SF
		barillet/keg	60 L	77-DCT-SF
<b>TO-4 SYN</b> toutes saisons / all-season	0W-20	seau/pail	18.9 L	18.9-SYNOW20T04-SF
		tote	1000 L	900-SYNOW20T04-SF
	5W-30	seau/pail	18.9 L	18.9-SYN5W30T04-SF
		tote	1000 L	900-SYN5W30T04-SF
		vrac/bulk	vrac/bulk	100-SYN5W30T04-SF
<b>ATF HD-295</b> Allison TES-295		seau/pail	18.9 L	18.9-ATFS295
		barillet O/keg O	60 L	60-ATFS295
		barillet/keg	60 L	77-ATFS295
		baril/drum	205 L	205-ATFS295
		tote	1000 L	900-ATFS295
<b>ATF HD-668</b> Allison TES-668		seau/pail	18.9 L	18.9-ATFS668-SF
		barillet O/keg O	60 L	60-ATFS668-SF
		baril/drum	205 L	205-ATFS668-SF
		tote	1000 L	900-ATFS668-SF
<b>CD-40</b> Eaton PS-386		seau/pail	18.9 L	18.9-ECD40-SF
		barillet O/keg O	60 L	60-ECD40-SF
		tote	1000 L	900-ECD40-SF
<b>CD-50</b> Eaton PS-164 Rev 7		seau/pail	18.9 L	18.9-ECD50-SF
		barillet O/keg O	60 L	60-ECD50-SF
		barillet/keg	60 L	77-ECD50-SF
		baril/drum	205 L	205-ECD50-SF
		tote	1000 L	900-ECD50-SF





# HUILE À ENGRENAGES / GEAR OIL

## CONVENTIONNELLE / CONVENTIONAL

PRODUIT / PRODUCT	GRADE	FORMAT	LITRES	CODE
<b>huile à engrenages / gear oil</b> API GL-5, SAE J2360	75W-90	pinte/quart	12 x 0.946 L	12-75W90-SF
		seau/pail	18.9 L	18.9-75W90-SF
		barillet O/keg O	60 L	60-75W90-SF
		barillet/keg	60 L	77-75W90-SF
		baril/drum	205 L	205-75W90-SF
	tote	1000 L	900-75W90-SF	
	80W-90	pinte/quart	12 x 0.946 L	12-80W90-SF
		gallon	4 x 3.7 L	14.8-80W90-SF
		seau/pail	18.9 L	18.9-80W90-SF
		barillet O/keg O	60 L	60-80W90-SF
		barillet/keg	60 L	77-80W90-SF
		baril/drum	205 L	205-80W90-SF
		tote	1000 L	900-80W90-SF
	vrac/bulk	vrac/bulk	100-80W90-SF	
	85W-140	seau/pail	18.9 L	18.9-85W140-SF
barillet O/keg O		60 L	60-85W140-SF	
tote		1000 L	900-85W140-SF	
<b>POSITRACTION</b> <b>huile à engrenages / gear oil</b> API GL-5, SAE J2360	80W-90	pinte/quart	12 x 0.946 L	12-80W90PT-SF
		seau/pail	18.9 L	18.9-80W90PT-SF
		barillet O/keg O	60 L	60-80W90PT-SF
		tote	1000 L	900-80W90PT-SF
<b>EP</b> <b>huile à engrenages / gear oil</b>	ISO 100	baril/drum	205 L	205-EP100-SF
		tote	1000 L	900-EP100-SF
	ISO 150	seau/pail	18.9 L	18.9-EP150-SF
		baril/drum	205 L	205-EP150-SF
		tote	1000 L	900-EP150-SF
		vrac/bulk	vrac/bulk	100-EP150-SF
	ISO 220	seau/pail	18.9 L	18.9-EP220-SF
		barillet O/keg O	60 L	60-EP220-SF
		baril/drum	205 L	205-EP220-SF
		tote	1000 L	900-EP220-SF
	ISO 320	seau/pail	18.9 L	18.9-EP320-SF
		baril/drum	205 L	205-EP320-SF
		tote	1000 L	900-EP320-SF
	ISO 460	seau/pail	18.9 L	18.9-EP460-SF
		baril/drum	205 L	205-EP460-SF

## 100% SYNTHÉTIQUE / SYNTHETIC

PRODUIT / PRODUCT	GRADE	FORMAT	LITRES	CODE
<b>huile à engrenages / gear oil</b> API GL-5, SAE J2360	75W-90	pinte/quart	12 x 0.946 L	12-SYN75W90-SF
		seau/pail	18.9 L	18.9-SYN75W90-SF
		barillet O/keg O	60 L	60-SYN75W90-SF
		barillet/keg	60 L	77-SYN75W90-SF
		baril/drum	205 L	205-SYN75W90-SF
	tote	1000 L	900-SYN75W90-SF	
	vrac/bulk	vrac/bulk	100-SYN75W90-SF	
	75W-140	pinte/quart	12 x 0.946 L	12-SYN75W140-SF
		seau/pail	18.9 L	18.9-SYN75W140-SF
		barillet O/keg O	60 L	60-SYN75W140-SF
barillet/keg		60 L	77-SYN75W140-SF	
tote		1000 L	900-SYN75W140-SF	
<b>EATON</b> <b>huile à engrenages / gear oil</b> Eaton PS-164 Rev 7	75W-90	seau/pail	18.9 L	18.9-SYNE75W90-SF
		barillet O/keg O	60 L	60-SYNE75W90-SF
		barillet/keg	60 L	77-SYNE75W90-SF
		baril/drum	205 L	205-SYNE75W90-SF
		tote	1000 L	900-SYNE75W90-SF
<b>EP</b> <b>huile à engrenages / gear oil</b>	ISO 150	seau/pail	18.9 L	18.9-SYNEP150-SF
	ISO 220	seau/pail	18.9 L	18.9-SYNEP220S
	ISO 320	seau/pail	18.9 L	18.9-SYNEP320
	ISO 6800	barillet O/keg O	60 L	60-EP6800



## HUILE HYDRAULIQUE AW (antiusure) AW (anti-wear) HYDRAULIC OIL

PRODUIT / PRODUCT	GRADE	FORMAT	LITRES	CODE	
<b>rouge / red</b>	ISO 22	seau/pail	18.9 L	18.9-AW22R-SF	
		baril/drum	205 L	205-AW22R-SF	
		tote	1000 L	900-AW22R-SF	
	ISO 32	seau/pail	18.9 L	18.9-AW32R-SF	
		baril/drum	205 L	205-AW32R-SF	
		tote	1000 L	900-AW32R-SF	
		vrac/bulk	vrac/bulk	100-AW32R-SF	
	ISO 46	seau/pail	18.9 L	18.9-AW46R-SF	
		baril/drum	205 L	205-AW46R-SF	
		tote	1000 L	900-AW46R-SF	
		vrac/bulk	vrac/bulk	100-AW46R-SF	
	ISO 68	seau/pail	18.9 L	18.9-AW68R-SF	
		baril/drum	205 L	205-AW68R-SF	
		tote	1000 L	900-AW68R-SF	
		vrac/bulk	vrac/bulk	100-AW68R-SF	
	<b>claire / clear</b>	ISO 10	seau/pail	18.9 L	18.9-AW10C-SF
tote			1000 L	900-AW10C-SF	
ISO 22		seau/pail	18.9 L	18.9-AW22C-SF	
		baril/drum	205 L	205-AW22C-SF	
		tote	1000 L	900-AW22C-SF	
		vrac/bulk	vrac/bulk	100-AW22C-SF*	
ISO 32		gallon	4 x 3.7 L	14.8-AW32C-SF	
		10 litres	2 x 10 L	20-AW32C-SF	
		seau/pail	18.9 L	18.9-AW32C-SF	
		baril/drum	205 L	205-AW32C-SF	
		tote	1000 L	900-AW32C-SF	
		vrac/bulk	vrac/bulk	100-AW32C-SF	
ISO 46		seau/pail	18.9 L	18.9-AW46C-SF	
		baril/drum	205 L	205-AW46C-SF	
		tote	1000 L	900-AW46C-SF	
		vrac/bulk	vrac/bulk	100-AW46C-SF	
ISO 68		gallon	4 x 3.7 L	14.8-AW68C-SF	
		seau/pail	18.9 L	18.9-AW68C-SF	
		baril/drum	205 L	205-AW68C-SF	
		tote	1000 L	900-AW68C-SF	
		vrac/bulk	vrac/bulk	100-AW68C-SF	
ISO 100		seau/pail	18.9 L	18.9-AW100C-SF	
		baril/drum	205 L	205-AW100C-SF	
		tote	1000 L	900-AW100C-SF	
<b>bleue / blue</b>		ISO 22	seau/pail	18.9 L	18.9-AW22B-SF
			baril/drum	205 L	205-AW22B-SF
			tote	1000 L	900-AW22B-SF
		ISO 32	vrac/bulk	vrac/bulk	100-AW32B-SF

\* disponible de décembre à février et de mai à août / available December through February and May through August

## HUILE HYDRAULIQUE (applications spécifiques) HYDRAULIC OIL (specific applications)

PRODUIT / PRODUCT	GRADE	FORMAT	LITRES	CODE
<b>TO-4</b> Caterpillar TO-2	10W	seau/pail	18.9 L	18.9-SP10T04-SF
		baril/drum	205 L	205-SP10T04-SF
		tote	1000 L	900-SP10T04-SF
		vrac/bulk	vrac/bulk	100-SP10T04-SF
<b>UNIVERSELLE / UNIVERSAL</b> Caterpillar TO-2	10W	seau/pail	18.9 L	18.9-SP10-SF
		baril/drum	205 L	205-SP10-SF
		tote	1000 L	900-SP10-SF
		vrac/bulk	vrac/bulk	100-SP10-SF
<b>TO-4 SYN</b> toutes saisons / all-season	0W-20	seau/pail	18.9 L	18.9-SYN0W20T04-SF
		tote	1000 L	900-SYN0W20T04-SF



**HUILE HYDRAULIQUE HVI (indice de viscosité élevé)**  
**HVI (high viscosity index) HYDRAULIC OIL**

PRODUIT / PRODUCT	GRADE	FORMAT	LITRES	CODE
<b>HVI</b>	ISO 15	seau/pail	18.9 L	18.9-HVI15-SF
		baril/drum	205 L	205-HVI15-SF
		tote	1000 L	900-HVI15-SF
	ISO 22	seau/pail	18.9 L	18.9-HVI22-SF
		baril/drum	205 L	205-HVI22-SF
		vrac/bulk	vrac/bulk	100-HVI22-SF
	ISO 32	seau/pail	18.9 L	18.9-HVI32-SF
		baril/drum	205 L	205-HVI32-SF
		vrac/bulk	vrac/bulk	100-HVI32-SF
	ISO 36	seau/pail	18.9 L	18.9-HVI36-SF
		baril/drum	205 L	205-HVI36-SF
		vrac/bulk	vrac/bulk	100-HVI36-SF
	ISO 46	seau/pail	18.9 L	18.9-HVI46-SF
		baril/drum	205 L	205-HVI46-SF
		vrac/bulk	vrac/bulk	100-HVI46-SF
	ISO 68	seau/pail	18.9 L	18.9-HVI68-SF
		baril/drum	205 L	205-HVI68-SF
		tote	1000 L	900-HVI68-SF

**HUILE HYDRAULIQUE FS (quatre saisons) MÉLANGE SYNTHÉTIQUE**  
**SYNTHETIC BLEND FS (four seasons) HYDRAULIC OIL**

PRODUIT / PRODUCT	GRADE	FORMAT	LITRES	CODE
<b>FS</b>	ISO 46	seau/pail	18.9 L	18.9-HYDFS-SF
		baril/drum	205 L	205-HYDFS-SF
		tote	1000 L	900-HYDFS-SF
		vrac/bulk	vrac/bulk	100-HYDFS-SF

**FLUIDE TRANS-HYDRAULIQUE TDH\***  
**TDH\* TRANS-HYDRAULIC FLUID**

PRODUIT / PRODUCT	TYPE	FORMAT	LITRES	CODE
<b>TDH</b> JDM J20C	conventionnel conventional	gallon	4 x 3.7 L	14.8-TDH-SF
		10 litres	2 x 10 L	20-TDH-SF
		seau/pail	18.9 L	18.9-TDH-SF
		barillet/keg	60 L	77-TDH-SF
		baril/drum	205 L	205-TDH-SF
		tote	1000 L	900-TDH-SF
<b>TDH HIVER / WINTER</b> JDM J20D	conventionnel conventional	seau/pail	18.9 L	18.9-TDHW-SF
		baril/drum	205 L	205-TDHW-SF
		tote	1000 L	900-TDHW-SF
		vrac/bulk	vrac/bulk	100-TDHW-SF
<b>TDH PLUS</b> Volvo CE WB-101	mélange synthétique synthetic blend	seau/pail	18.9 L	18.9-TDHPLUS
		baril/drum	205 L	205-TDHPLUS
<b>TDH SYN</b> toutes saisons / all-season	synthétique synthetic	seau/pail	18.9 L	18.9-TDHSYN-SF
		baril/drum	205 L	205-TDHSYN-SF
		tote	1000 L	900-TDHSYN-SF

\* aussi connu sous les noms / also known as: THF (Tractor-Hydraulic-Fluid), UTF (Universal-Tractor-Fluid),  
 UTTO (Universal-Tractor-Transmission-Oil), UTHF (Universal-Tractor-Hydraulic-Fluid)



## HUILE POUR SCIES À CHAÎNE CHAIN SAW OIL

PRODUIT / PRODUCT	GRADE	FORMAT	LITRES	CODE
<b>huile pour scies à chaîne chain saw oil</b> COLORÉE / COLORED	légère/light	gallon	4 x 3.7 L	14.8-CHL-SF
		seau/pail	18.9 L	18.9-CHL-SF
		tote	1000 L	900-CHL-SF
	médium/medium	gallon	4 x 3.7 L	14.8-CHM-SF
		seau/pail	18.9 L	18.9-CHM-SF
		tote	1000 L	900-CHM-SF
	lourde/heavy	gallon	4 x 3.7 L	14.8-CHH-SF
		seau/pail	18.9 L	18.9-CHH-SF
		tote	1000 L	900-CHH-SF
	lourde +/heavy +	seau/pail	18.9 L	18.9-CHHP-SF
		tote	1000 L	900-CHHP-SF
<b>huile pour scies à chaîne chain saw oil</b> NON COLORÉE / UNCOLORED	légère/light	baril/drum	205 L	205-CHLNC-SF
		tote	1000 L	900-CHLNC-SF
		vrac/bulk	vrac/bulk	100-CHLNC-SF
	médium/medium	baril/drum	205 L	205-CHMNC-SF
		tote	1000 L	900-CHMNC-SF
		vrac/bulk	vrac/bulk	100-CHMNC-SF
	lourde/heavy	baril/drum	205 L	205-CHHNC-SF
		tote	1000 L	900-CHHNC-SF
		vrac/bulk	vrac/bulk	100-CHHNC-SF*

\* disponible de décembre à février et de mai à août / available December through February and May through August

## GRAISSE GREASE

PRODUIT / PRODUCT	COULEUR COLOR	GRADE	FORMAT	Kg	CODE
<b>LITHO-PRO</b> service léger / light duty	Yellow	NLGI #2	tube/cartridge	50 x 397g	50/397-LITHO2
			seau/pail	17 kg	17-LITHO2
			barillet/keg	55 kg	55-LITHO2
			baril/drum	170 kg	180-LITHO2
<b>HD-PRO</b> service sévère / heavy duty	Red	NLGI GC-LB #1	tube/cartridge	50 x 397g	50/397-HDPRO1
			seau/pail	17 kg	17-HDPRO1
			barillet/keg	55 kg	55-HDPRO1
		NLGI GC-LB #2	baril/drum	170 kg	180-HDPRO1
			tube/cartridge	50 x 397g	50/397-HDPRO2
			seau/pail	17 kg	17-HDPRO2
<b>HD-EXTRA</b> super collante / tacky	Red	NLGI GC-LB #2	barillet/keg	55 kg	55-HDPRO2
			baril/drum	170 kg	180-HDPRO2
			tube/cartridge	50 x 397g	50/397-HDEXTRA2
<b>SYN-PRO</b> service extrême / extreme duty	Blue	NLGI GC-LB #2	seau/pail	17 kg	17-HDEXTRA2
			barillet/keg	55 kg	55-HDEXTRA2
			baril/drum	170 kg	180-HDEXTRA2
<b>SUPREME</b> service sévère / heavy duty	Red	NLGI GC-LB #2	454 g pot	12 x 454 g	12/1-BEARING-SF
			1,82 kg pot	6 x 1,82 kg	6/4-BEARING-SF
<b>HD-5</b> sellattes d'attellages / 5 <sup>th</sup> wheel	Red	NLGI #2	seau/pail	17 kg	17-HD5
			barillet/keg	55 kg	55-HD5



## LUBRIFIANTS BIODÉGRADABLES BIODEGRADABLE LUBRICANTS

PRODUIT / PRODUCT	GRADE-TYPE	FORMAT	LITRES	CODE
<b>PROFLEX ECOLO*</b> huile de procédé / process oil	2020	baril/drum tote	205 L 1000 L	205-FLEX2020-SF 900-FLEX2020-SF
	2060	baril/drum tote	205 L 1000 L	205-FLEX2060-SF 900-FLEX2060-SF
<b>ECOLO*</b> huile à vacuum / vacuum oil	60	seau/pail tote	18.9 L 1000 L	18.9-VACECO-SF 900-VACECO-SF
<b>ECOLO*</b> huile à formes / form release oil	ISO 22	baril/drum tote	205 L 1000 L	205-FORMENV-SF 900-FORMENV-SF
	ISO 32	seau/pail baril/drum tote	18.9 L 205 L 1000 L	18.9-ECOLO32-SF 205-ECOLO32-SF 900-ECOLO32-SF
<b>ECOLO*</b> huile hydraulique / hydraulic oil	ISO 46	seau/pail baril/drum tote	18.9 L 205 L 1000 L	18.9-ECOLO46-SF 205-ECOLO46-SF 900-ECOLO46-SF
	ISO 68	seau/pail baril/drum tote	18.9 L 205 L 1000 L	18.9-ECOLO68-SF 205-ECOLO68-SF 900-ECOLO68-SF
	ISO 15	seau/pail baril/drum	18.9 L 205 L	18.9-HEES15-SF 205-HEES15-SF
		seau/pail baril/drum	18.9 L 205 L	18.9-HEES22-SF 205-HEES22-SF
	ISO 32	seau/pail baril/drum tote	18.9 L 205 L 1000 L	18.9-HEES32-SF 205-HEES32-SF 900-HEES32-SF
		ISO 46	seau/pail baril/drum tote	18.9 L 205 L 1000 L
ISO 68	seau/pail baril/drum	18.9 L 205 L	18.9-HEES68-SF 205-HEES68-SF	

\* intrinsèquement biodégradable / inherently biodegradable (20-60% en/in 28 jours/days)

\*\* rapidement biodégradable / readily biodegradable (>80% en/in 28 jours/days)



## LUBRIFIANTS INDUSTRIELS INDUSTRIAL LUBRICANTS







PRODUIT / PRODUCT	GRADE-TYPE	FORMAT	LITRES	CODE
<b>PROFLEX</b> huile de procédé / process oil	1006	seau/pail	18.9 L	18.9-FLEX1006-SF
		baril/drum	205 L	205-FLEX1006-SF
		tote	1000 L	900-FLEX1006-SF
	1010	vrac/bulk	vrac/bulk	100-FLEX1010-SF
	1020	tote	1000 L	900-FLEX1020-SF
		vrac/bulk	vrac/bulk	100-FLEX1020-SF
<b>huile à vacuum / vacuum oil</b>	ISO 46	vrac/bulk	vrac/bulk	100-VACUUM46-SF*
<b>huile à formes / form release oil</b>	été/summer	seau/pail	18.9 L	18.9-FORME-SF
		baril/drum	205 L	205-FORME-SF
		tote	1000 L	900-FORME-SF
	hiver/winter	baril/drum	205 L	205-FORMW-SF
		tote	1000 L	900-FORMW-SF
<b>SAWFLEX rouge / red</b>	ISO 68	tote	1000 L	900-SAW68R-SF
		vrac/bulk	vrac/bulk	100-SAW68R-SF
<b>SAWFLEX claire / clear</b>	ISO 32	baril/drum	205 L	205-SAW32C-SF
		tote	1000 L	900-SAW32C-SF
		vrac/bulk	vrac/bulk	100-SAW32C-SF
	ISO 46	tote	1000 L	900-SAW46C-SF
		vrac/bulk	vrac/bulk	100-SAW46C-SF
	ISO 68	baril/drum	205 L	205-SAW68C-SF
		tote	1000 L	900-SAW68C-SF
		vrac/bulk	vrac/bulk	100-SAW68C-SF
	<b>huile R&amp;O / R&amp;O oil</b> pas d'additifs anti-usure, sans zinc no anti-wear additives, zinc-free	ISO 10	tote	1000 L
vrac/bulk			vrac/bulk	100-RO10-SF*
ISO 32		seau/pail	18.9 L	18.9-RO32-SF
		tote	1000 L	900-RO32-SF
ISO 68		seau/pail	18.9 L	18.9-RO68-SF
		baril/drum	205 L	205-RO68-SF
<b>huile pour guide-lames / sawguide oil</b>	ISO 150	baril/drum	205 L	205-SAW150-SF
		vrac/bulk	vrac/bulk	100-SAW150-SF
<b>huile à glissières / waylube oil</b>	ISO 68	seau/pail	18.9 L	18.9-WAY68-SF
		baril/drum	205 L	205-WAY68-SF
		tote	1000 L	900-WAY68-SF
		vrac/bulk	vrac/bulk	100-WAY68-SF
	ISO 220	baril/drum	205 L	205-WAY220-SF
		tote	1000 L	900-WAY220-SF
		vrac/bulk	vrac/bulk	100-WAY220-SF*
<b>huile de coupe soluble soluble cutting oil</b>	N/A	seau/pail	18.9 L	18.9-CUTSOL-SF
		baril/drum	205 L	205-CUTSOL-SF
		tote	1000 L	900-CUTSOL-SF
<b>huile caloporteuse / heat transfer oil</b>	ISO 22	seau/pail	18.9 L	18.9-TRANS22-SF
		baril/drum	205 L	205-TRANS22-SF
		tote	1000 L	900-TRANS22-SF
	ISO 46	seau/pail	18.9 L	18.9-TRANS46-SF
		baril/drum	205 L	205-TRANS46-SF
		tote	1000 L	900-TRANS46-SF
<b>huile pour foreuses de roc rock drill oil</b>	ISO 46	seau/pail	18.9 L	18.9-ROC46-SF
	ISO 68	seau/pail	18.9 L	18.9-ROC68-SF
		tote	1000 L	900-ROC68-SF
	ISO 100	seau/pail	18.9 L	18.9-ROC100-SF
	ISO 150	seau/pail	18.9 L	18.9-ROC150-SF
	ISO 220	seau/pail	18.9 L	18.9-ROC220-SF
ISO 320	seau/pail	18.9 L	18.9-ROC320-SF	

\* disponible de décembre à février et de mai à août / available December through February and May through August





## ANTIGEL/LIQUIDE DE REFROIDISSEMENT ANTIFREEZE/COOLANTS

PRODUIT / PRODUCT	APPLICATION	COULEUR COLOR	DURÉE DURATION	DILUTION	FORMAT	LITRES	CODE			
<b>UNIVERSEL / UNIVERSAL</b>			80 000 km 2 ans / yrs	concentré concentrated	gallon	4 x 3.7 L	14.8-ANTIGEL-SF			
					barillet/keg	60 L	77-ANTIGEL-SF			
					baril/drum	205 L	205-ANTIGEL-SF			
				50/50	gallon	4 x 3.7 L	14.8-MIXANTIUSF			
					barillet/keg	60 L	77-MIXANTIUSF			
baril/drum	205 L	205-MIXANTIUSF								
<b>GLOBAL</b> longue durée / long life			250 000 km 5 ans / yrs	concentré concentrated	gallon	4 x 3.7 L	14.8-GLOBAL-SF			
					barillet/keg	60 L	77-GLOBAL-SF			
					baril/drum	205 L	205-GLOBAL-SF			
				50/50	gallon	4 x 3.7 L	14.8-GLO50/50-SF			
					barillet/keg	60 L	77-GLO50/50-SF			
baril/drum	205 L	205-GLO50/50-SF								
<b>SUPREME</b> longue durée / long life			250 000 km 5 ans / yrs	concentré concentrated	gallon	4 x 3.7 L	14.8-SUPREME-SF			
					barillet/keg	60 L	77-SUPREME-SF			
				50/50	baril/drum	205 L	205-SUPREME-SF			
					barillet/keg	60 L	77-SUPREME50			
<b>DIESEL</b>			80 000 km 2 ans / yrs	concentré concentrated	gallon	4 x 3.7 L	14.8-DIESEL-SF			
					barillet/keg	60 L	77-DIESEL-SF			
					baril/drum	205 L	205-DIESEL-SF			
				50/50	gallon	4 x 3.7 L	14.8-DIE50/50-SF			
					barillet/keg	60 L	77-DIE50/50-SF			
baril/drum	205 L	205-DIE50/50-SF								
<b>DIESEL</b> longue durée / long life			1 600 000 km 8 ans / yrs	concentré concentrated	gallon	4 x 3.7 L	14.8-DIELD-SF			
					barillet/keg	60 L	77-DIELD-SF			
					baril/drum	205 L	205-DIELD-SF			
				60/40	baril/drum	205 L	205-DIELD60-SF			
					tote	1000 L	900-DIELD60-SF			
50/50	gallon	4 x 3.7 L	14.8-DIELD50-SF							
	barillet/keg	60 L	77-DIELD50-SF							
	baril/drum	205 L	205-DIELD50-SF							
<b>GLOBAL DIESEL</b> longue durée sans nitrite long life nitrite-free			1 600 000 km 8 ans / yrs	concentré concentrated	gallon	4 x 3.7 L	14.8-GLONF-SF			
					barillet/keg	60 L	77-GLONF-SF			
					baril/drum	205 L	205-GLONF-SF			
				50/50	gallon	4 x 3.7 L	14.8-GLONF50-SF			
					barillet/keg	60 L	77-GLONF50-SF			
baril/drum	205 L	205-GLONF50-SF								

PRODUIT / PRODUCT	DILUTION	FORMAT	LITRES	CODE
<b>RV COOL</b> antigel à plomberie / plumbing antifreeze	prêt à l'emploi ready to use	gallon	4 x 3.78 L	15.12-RVCOOL-SF
		baril/drum	205 L	205-RVCOOL-SF
<b>CALPRO</b> fluide de transfert de chaleur heat transfer fluid	concentré concentrated	seau/pail	18.9 L	18.9-CALPRO-SF
		baril/drum	205 L	205-CALPRO-SF
		tote	1000 L	900-CALPRO-SF
	50/50	seau/pail	18.9 L	18.9-CAL50-SF
		baril/drum	205 L	205-CAL50-SF
		tote	1000 L	900-CAL50-SF



## LAVE-GLACE WINDSHIELD WASHER

PRODUIT / PRODUCT	TEMPERATURE	FORMAT	LITRES	CODE
lave-glace / windshield washer	-40°C	gallon	4 x 3.78 L	15.12-WW-SF
		baril/drum	205 L	205-WW-SF
		tote	1000 L	900-WW-SF

## ANTIROUILLE ANNUEL ANNUAL RUSTPROOFING

PRODUIT / PRODUCT	TYPE	FORMAT	LITRES	CODE
antirouille annuel annual rustproofing	ambre (intérieur) amber (interior)	gallon	4 x 3.7 L	14.8-AAA-SF
		seau/pail	18.9 L	18.9-AAA-SF
		baril/drum	205 L	205-AAA-SF
	noir (extérieur) black (exterior)	gallon	4 x 3.7 L	14.8-AAN-SF
		seau/pail	18.9 L	18.9-AAN-SF
		baril/drum	205 L	205-AAN-SF

## FLUIDE D'ÉCHAPPEMENT DIESEL DIESEL EXHAUST FLUID

PRODUIT / PRODUCT	FORMAT	LITRES	CODE
DEF	boîte/box	9.46 L	9.46-UREE-SF
	baril/drum	205 L	205-UREE-SF
	tote	1000 L	900-UREE-SF

## NETTOYEUR POUR PIÈCES PARTS CLEANER

PRODUIT / PRODUCT	FORMAT	LITRES	CODE
nettoyeur pour pièces / parts cleaner	seau/pail	18.9 L	18.9-VARSOL-SF
	baril/drum	205 L	205-VARSOL-SF

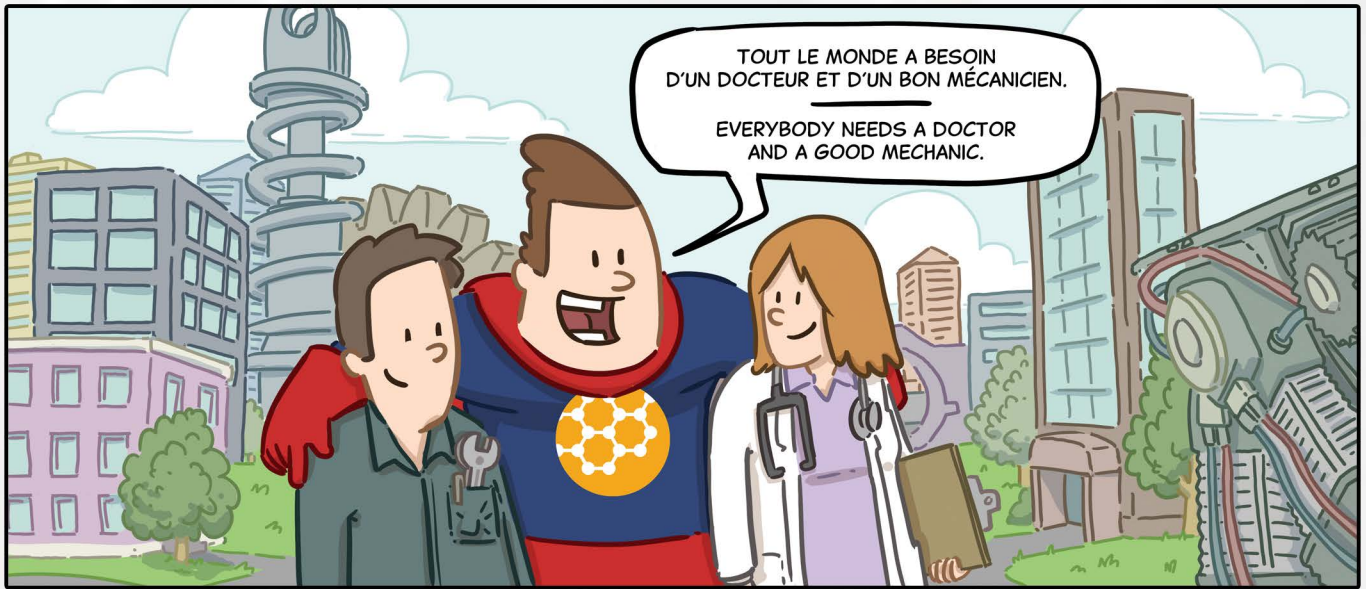


# NOS GÉRANTS DE TERRITOIRE OUR TERRITORY MANAGERS

Si vous avez des questions  
concernant les produits  
de ce catalogue,  
n'hésitez pas à appeler  
votre gérant de territoire  
ou notre service à la clientèle  
au 1 800 393-3921, poste 1.

If you have any questions  
concerning the products  
in this catalog,  
please feel free to call  
your territory manager  
or our customer service  
at 1 800 393-3921, extension 1.





# **APRIL** *Super Flo*

**SIÈGE SOCIAL / HEAD OFFICE**  
9, rue Bêland  
L'Isle-Verte QC Canada G0L 1K0  
1-800-393-3921

**CENTRE DE DISTRIBUTION / DISTRIBUTION CENTER**  
7740, rue Ravenel  
Anjou QC Canada H1J 2J4

**123april.com**



**APRIL  
NANOMAN™**